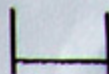
 Kurt Henemann	Gez.	24.2.82	Ristow			
	Wasser				0363	Ristow
	Gepr.	2.4.82			Dot	Neue
	Gesam.				Zeichnung Nr.	
2-fach Trennverstärker CH 242N				Arz	Dr.	

1. Widerstände

R 1	4K7
R 2	15K
R 3	47K
R 4	10K
R 5	6K2
R 6	5K6
R 7	1K
R 8	1K
R 9	22R
R 10	56R
R 11	82R
R 12	100R
R 13	4K7
R 14	56R
R 15	75R
R 16	75R
R 17	2K7

2. Kondensatoren

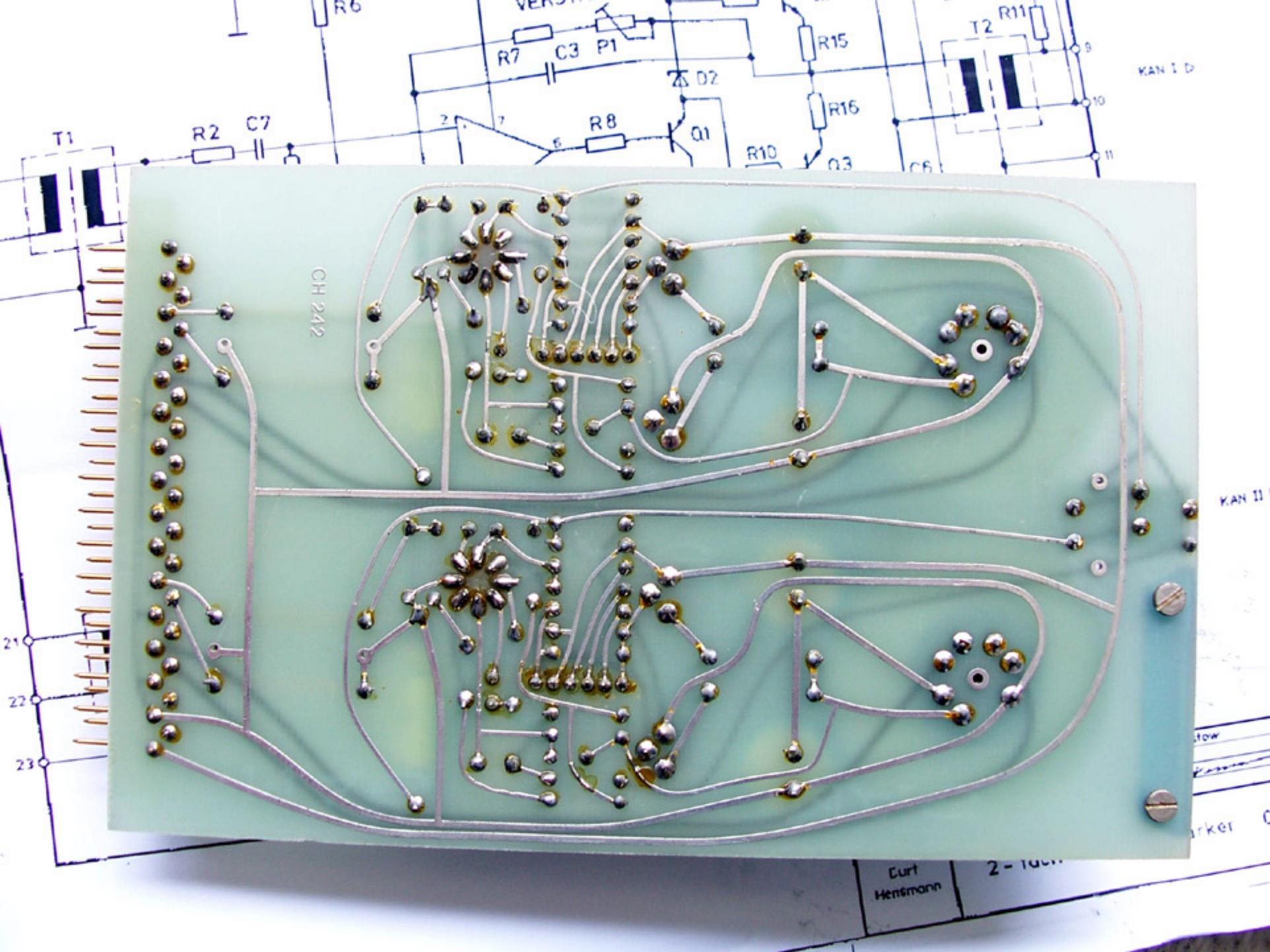
C 1	220 $\mu$ F/25V
C 2	6,8 $\mu$ F/35V Tantal
C 3	56pF Keramik
C 4	0,1 $\mu$ F/100V MKS
C 5	220 $\mu$ F/25V
C 6	220 $\mu$ F/25V
C 7	0,22 $\mu$ F/63V MKS
C 8	1000 $\mu$ F/40V

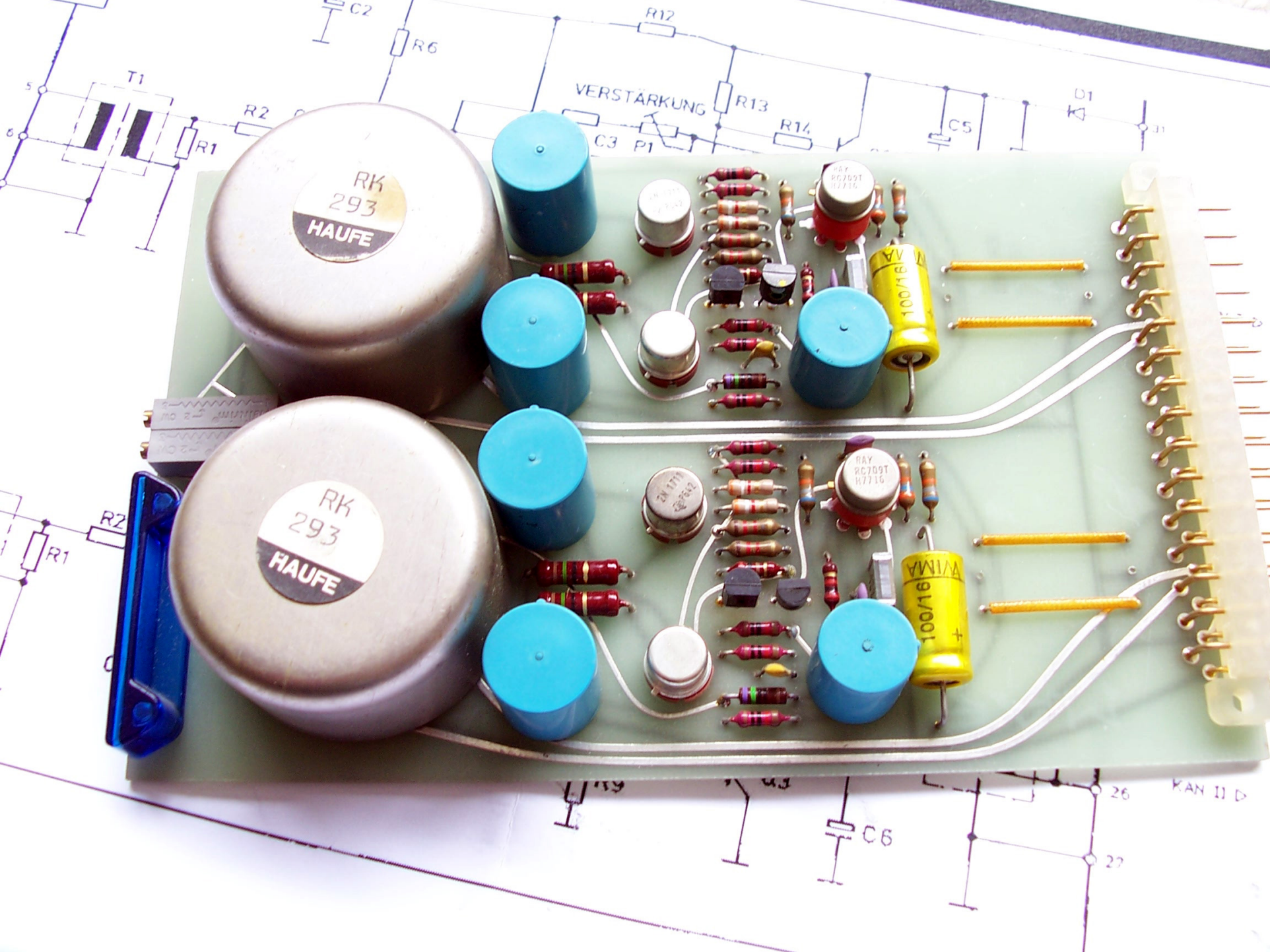
3. Halbleiter

D 1	1N4004
D 2	ZD2,7V
IC 1	741 OPN
Q 1	BC 416B
Q 2	BC 337
Q 3	BC 327
LED	mit Fassung Fa. Schueco

4. Sonstiges

I 1	Typ RK 464
T 2	Typ RK 518
P 1	50K





RK  
293  
HAUFE

RK  
293  
HAUFE

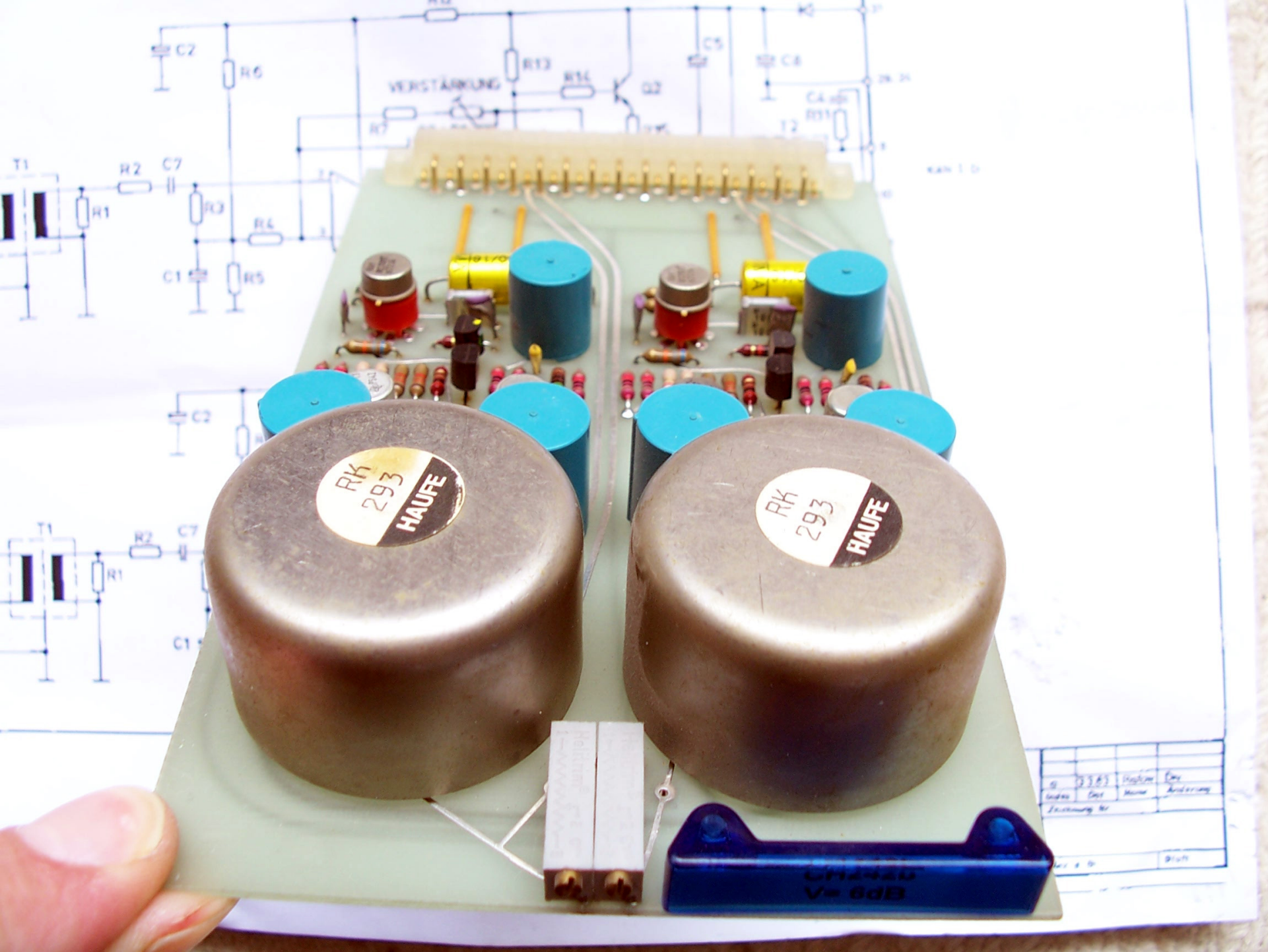
VERSTÄRKUNG

100/16  
WIMA

100/16  
WIMA

C6

KAN II D



RK  
293  
HAUFE

RK  
293  
HAUFE

Vp 6dB

Hohlraum

No.	Date	Name	Änderung